



Beyond motion control technology.

# SCOPE!

Nabtesco

Where is Nabtesco? Where is the future?

In the skies, the seas, and across the land...  
Amid blowing winds and gigantic forces,  
the essence of motion control technology is alive and well.

Nabtesco employees are on a quest for dreams in the rough diamond that will shape the society of tomorrow.



From way up here, visions of "what could be" emerge all over the city!

Imagine how eco-friendly it would be if electricity could be reliably supplied via wind turbine and solar power alone!

If there were a plane you could board and disembark from anywhere, you could get moving right away.

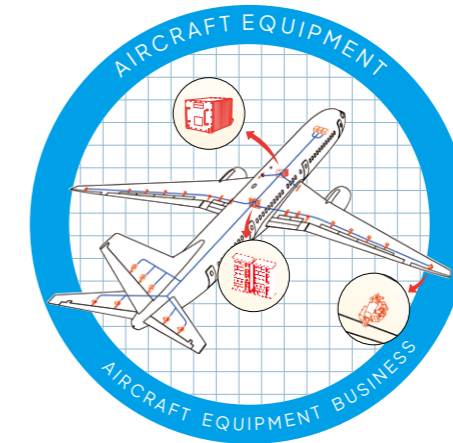
I want to travel on a high-speed train as comfortable as my own room!

Controlling ships remotely from home could be an interesting idea.



### Corporate Philosophy

The Nabtesco Group, with our unique motion control technology, will provide safety, comfort and a sense of security in daily lives as well as any form of transportation.



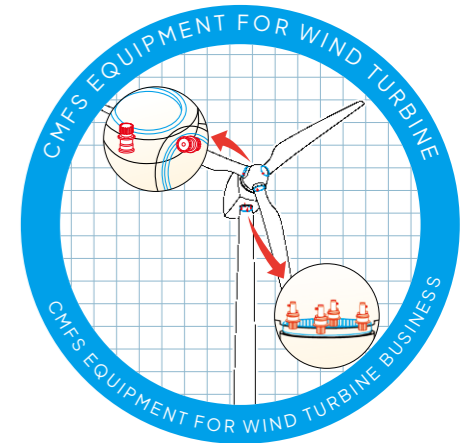
### Ensuring safe and comfortable air travel

The Flight Control Actuation System, which controls three-dimensional movement of aircraft freely, is one of Nabtesco's main products. We support your safe and comfortable air travel.

SDGs related to our business



<https://www.nabtesco.com/en/products/aircraft/>



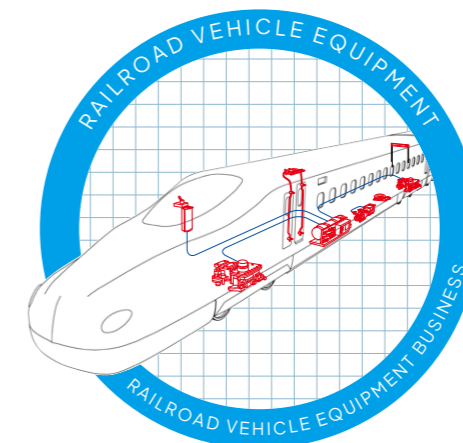
### Enhancing the uptime of wind turbines

Wind turbines are often installed in harsh environments exposed to strong winds. Our contribution to the environment is to reduce the number of failures of wind power generators and provide them with high safety and stability.

SDGs related to our business



<https://www.nabtesco.com/en/products/windpower/>



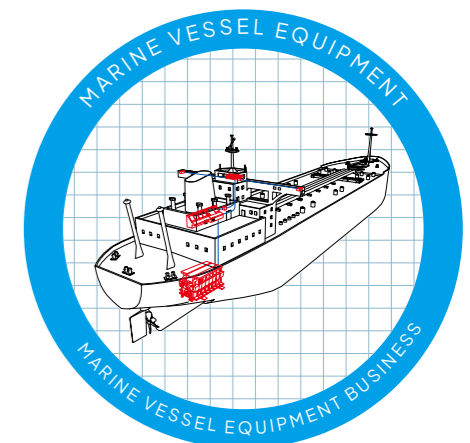
### Providing safe, secure, and comfortable operation for railroad vehicles, an eco-friendly means of transportation, is part of "our technology" too

Our brake systems and doors for railroad vehicles are motion control technology present in your daily life.

SDGs related to our business



<https://www.nabtesco.com/en/products/railway/>



### Making large-scale maritime transportation more sustainable

Large ships navigate the globe laden with numerous goods and people. Precise control of the main engines is crucial not just for safe voyages, but also for fuel efficiency and reduced environmental impact.

SDGs related to our business



<https://www.nabtesco.com/en/products/ship/>

Where is Nabtesco? Where is the future?

Great force coupled with precise action.  
Our motion control technology is  
at work here, too!

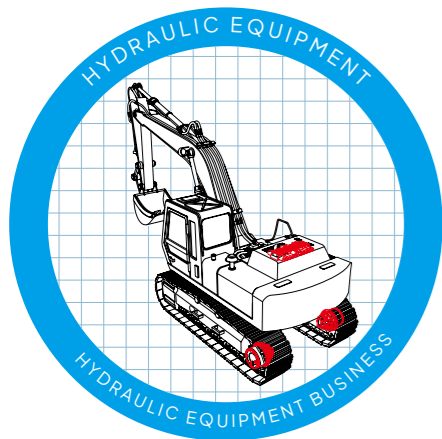
Streets and building interiors  
contain plenty of potential  
for our motion control technology!

It'd be great to have an  
excavator that can help  
reduce CO<sub>2</sub> emissions!

I'd definitely like to eat  
this fresh food in space  
too.

I wonder if robots could  
assemble a car just for me  
quickly and effectively.

It might be wonderful to have  
less noise trucks powered by  
renewable energy.



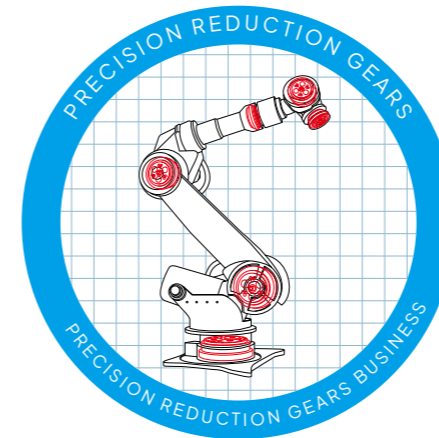
### Small yet mighty. The technology that constructs cities.

Excavators and other construction machinery build cities and support infrastructure. Through our technology that produces significant power with small units, we are developing new technologies for the electrification of construction machinery, so we can help reduce CO<sub>2</sub> emissions.

SDGs related to our business



<https://www.nabtesco.com/en/products/powershovel/>



### Precision Reduction Gears make industrial robots' precise movements

The precision reduction gears used in the joints of robots convert motor rotation into a large torque. In preparation for the coming era of smart mechatronics, we are further evolving our precision reduction gears.

SDGs related to our business



<https://www.nabtesco.com/en/products/robot/>



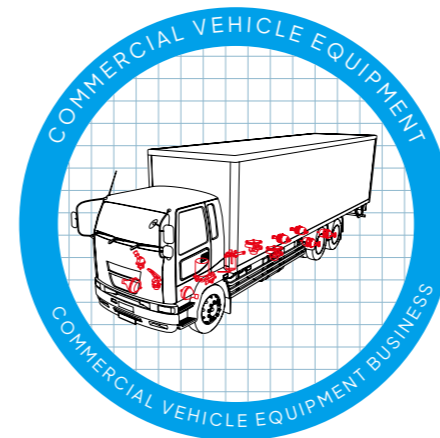
### Supporting safe, secure, and clean packaging products

Packaging is indispensable not only for food, but also for toiletries and detergents. In preparation for the arrival of new eco-friendly packaging materials, we are providing pouch filling and sealing machines that meet high demands for safety, security, and cleanliness.

SDGs related to our business



<https://www.nabtesco.com/en/products/packing/>



### Eco-friendly air brake technology contributing to fuel efficiency

Our daily lives are made possible thanks to distribution via trucks. Most of these trucks are equipped with Nabtesco's air brake products. We are furthering the development of new technologies for the next generation of mobility and electrification.

SDGs related to our business



<https://www.nabtesco.com/en/products/automobile/>

Where is Nabtesco? Where is the future?

We're aiming for a world where anyone can travel in comfort anytime  
We are always by your side.



Ideas about "what could be" are rough diamond of dreams  
How can I give it shape?



With a rollator that can even be used on stairs, I can have an easier time going anywhere.

Wouldn't it be wonderful if the opening and closing of automatic doors were linked with security and people flow management throughout the building?



Prosthetics that allow smooth movement at will, such as prosthetic legs and arms, are absolutely necessary!



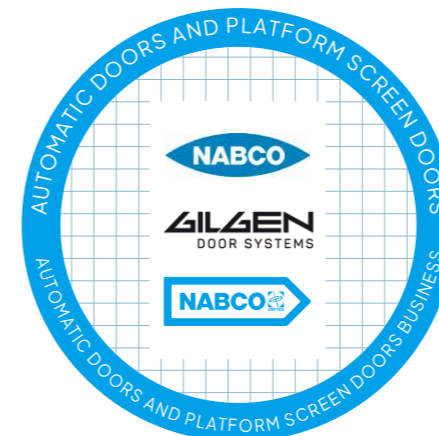
### Prosthetic knee joints that allow for unrestricted, secure walking

For those who have lost a limb, the functionality of a prosthetic knee joint is crucial not only for mobility, but also for taking part in society. We aim for a society where everyone can lead vibrant lives using advanced technologies, such as prosthetics featuring hydraulic electronic controls.

SDGs related to our business



<https://www.nabtesco.com/en/products/welfare/>



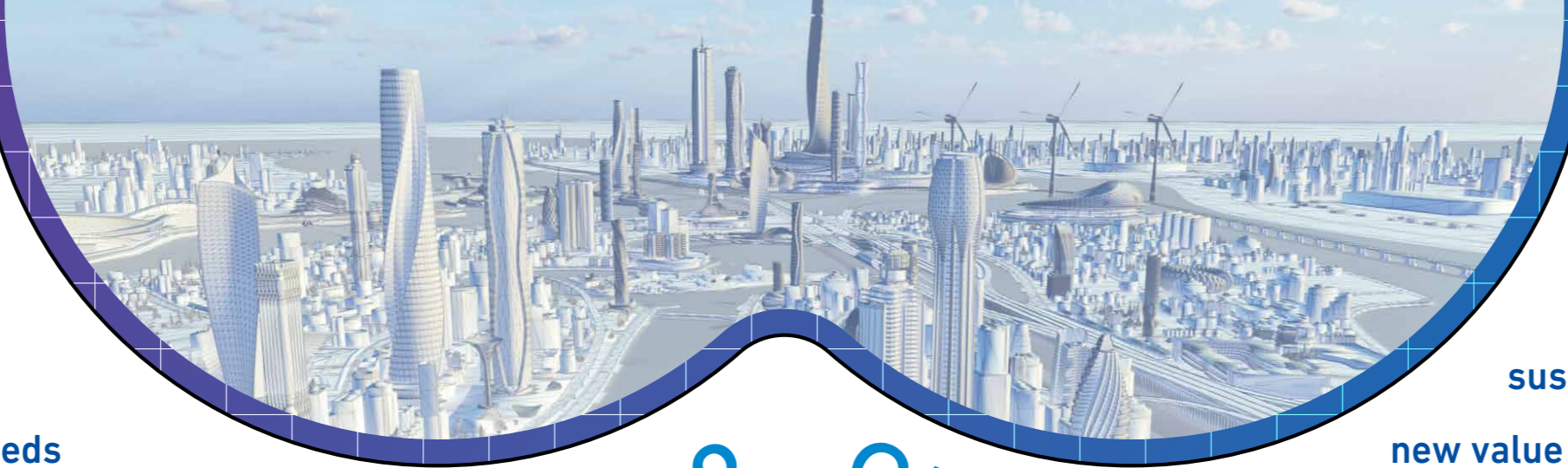
### A pioneer in automatic doors supporting social infrastructure

You may be familiar with the logo for our automatic door brand, NABCO. Nabtesco's automatic doors, including platform doors installed at train station, contribute to a barrier-free society via high reliability and service, and they are eco-friendly as well.

SDGs related to our business



<https://www.nabtesco.com/en/products/automaticdoor/>



Looking toward 2030  
and beyond...

We satisfy the world's needs  
with our motion control technology

# Nabtesco Challenge

What we can do for a  
sustainable future: creating  
new value through the evolution of  
motion control technology

With Our motion control technology based on the key concept of “moving it. stopping it.” has provided support for social infrastructure in various places around the globe and in numerous aspects of your life. We are constantly pursuing the next step for this technology. The voices imagining “what could be” in the illustrations represent “the rough diamond of dreams”. Helping these dreams to take shape is our own dream. To make

everyone's dreams come true, Nabtesco will continue to take on the challenge of innovation with our unique motion control technology.

To provide safety, comfort, and a sense of security for everyone in the mobility and lifestyle domains, as well as contribute to a rich society and global environment, we will aim to be “Leaders in Innovation for the Future.”

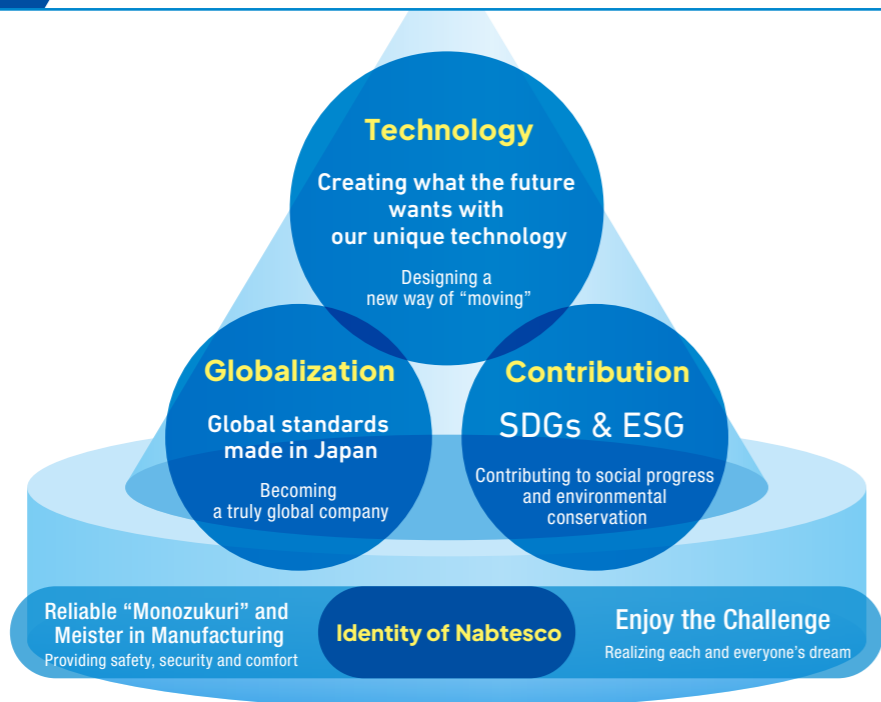
Nabtesco will evolve its unique motion control technology. To this end, we are taking on the challenge of creating new value by transitioning from a hardware technologies and component-centric approach to one that focuses on electrification, systematization, and DX

(digital transformation). We are committed to helping achieve a sustainable society by pioneering new motion control domains through our efforts to challenge Innovation and creation.

## Innovation In Action Vision 2030

Vision 2030

Leaders in Innovation for the Future



### Examples of new challenges (electrification, systematization, and DX)

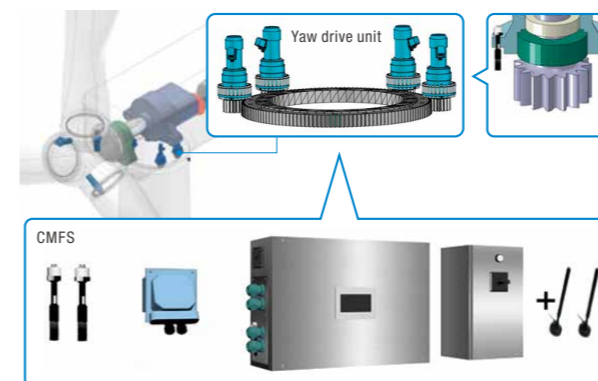
#### CMFS (Condition Monitoring System with Fail-Safe) for wind turbines

##### Challenges in the Wind Turbine Industry

- Damage to wind turbine drive unit due to gusts, etc.  
⇒Inability to provide stable power transmission
- Installation in mountainous and offshore areas, etc.  
⇒Immediately responding to repairs is challenging

##### Solutions

- Providing fail-safe systems



#### Solutions for marine vessels

##### Challenges in the Maritime and Shipping Industry

- Aging crew members and a shortage of young crew members  
⇒Safe maritime navigation becomes challenging
- Skyrocketing fuel costs  
⇒Skyrocketing maritime transportation costs

##### Solutions

- Providing autonomous navigation systems
- Improved fuel efficiency

Nabtesco's marine engine control system



Engine remote control

Optimal Maritime Route Selection (Pythia)  
Maritime Performance Monitoring (Cassandra)



Optimal Maritime Route Selection (Pythia)

By further accelerating electrification/systematization and DX in our business domains, we aim to be Leaders in Innovation for the Future, thereby advancing the provision of higher value-added products.

Ideas about “what could be”  
are rough diamond of dreams.  
We are heading towards the future.



**Motion control technology is how we create dreams.  
Employees who embody this passion are Nabtesco’s greatest assets.**

Our long-term vision of Leaders in innovation for the future relies on an indispensable resource: namely, our employees. Human capital is a primary source of our value creation process. In order to “meet” the expectations of customers, we need personnel who are strongly committed to meeting the needs of customers through unyielding technological innovation, performance & quality improvement and higher productivity. To take the next step of then exceeding the expectations of customers and society, we need to develop and attract personnel who can expand our existing business domains and launch new businesses to create and propose expectation-exceeding value. Nabtesco regularly conducts an employee engagement and organizational

diagnosis survey to grasp employees’ subjective ideas based on their engagement scores and clarify the present situation from the viewpoint of individuals and organizational culture. These findings inform initiative such as reforming our education and reskilling systems, thus aiding in the acquisition and development of personnel who will shape Nabtesco’s future.

This forms the foundation that gives rise to innovative human capital who can give voice to a future based on motion control technology.

Nabtesco, with its long-term vision of “Leaders in Innovation for the Future,” is committed to investing in human capital that allow employees of all backgrounds to take on exciting work with smiles on their faces.



**We support the proactive initiatives of our employees.**



Engagement

**With an enriching educational program, we respond to our employees’ motivations.**



Human Capital Development

**Our employees can choose a style of working that fits their lifestyle.**



Fostering Workplace Diversity

# The Nabtesco Way

## Corporate Philosophy

The Nabtesco Group, with our unique motion control technology, will provide safety, comfort and a sense of security in daily lives as well as any form of transportation.

## The Principles We Value



See the people.  
See the planet.



Improve ourselves.  
Advance society.



Create together.



Enjoy the challenge.



Stay curious.  
Explore further.



Be open, fair,  
and honest.

The Nabtesco Way is a collective term that means the Corporate Philosophy and the Principles We Value.

By putting the Nabtesco Way into practice, we will lead to innovation.



The Nabtesco Way

### Company Overview

Company Name: Nabtesco Corporation  
Established: September 29, 2003  
Address: JA Kyosai Bldg., 7-9, Hirakawacho 2-chome, Chiyoda-ku, Tokyo 102-0093, Japan  
TEL: +81-3-5213-1133



<https://www.nabtesco.com/en/about/company/overview/>

### Primary Business Overview

**Precision Reduction Gears**  
Precision Equipment Company  
TEL: +81-3-5213-1151  
URL: <https://precision.nabtesco.com/en/application/>



**Hydraulic Equipment**  
Power Control Company  
TEL: +81-3-5213-1152  
URL: <https://powercontrol.nabtesco.com/en/>



**Railroad Vehicle Equipment**  
Railroad Products Company  
TEL: +81-3-5213-1164  
E-mail: [railroad@nabtesco.com](mailto:railroad@nabtesco.com)

**Aircraft Equipment**  
Aerospace Company  
TEL: +81-3-5213-1165  
E-mail: [aerospace@nabtesco.com](mailto:aerospace@nabtesco.com)

**Marine Vessel Equipment**  
Marine Control Systems Company  
TEL: +81-78-967-5361  
URL: <https://marine.nabtesco.com/english/index.html>



**Commercial Vehicle Equipment**  
Nabtesco Automotive Corporation  
TEL: +81-3-5213-1191  
URL: <https://www.nabtesco-automotive.com/en/>



**Automatic Doors and Platform Screen Doors**  
Accessibility Innovations Company  
TEL: +81-3-5213-1156  
URL: <https://nabco.nabtesco.com/en/>

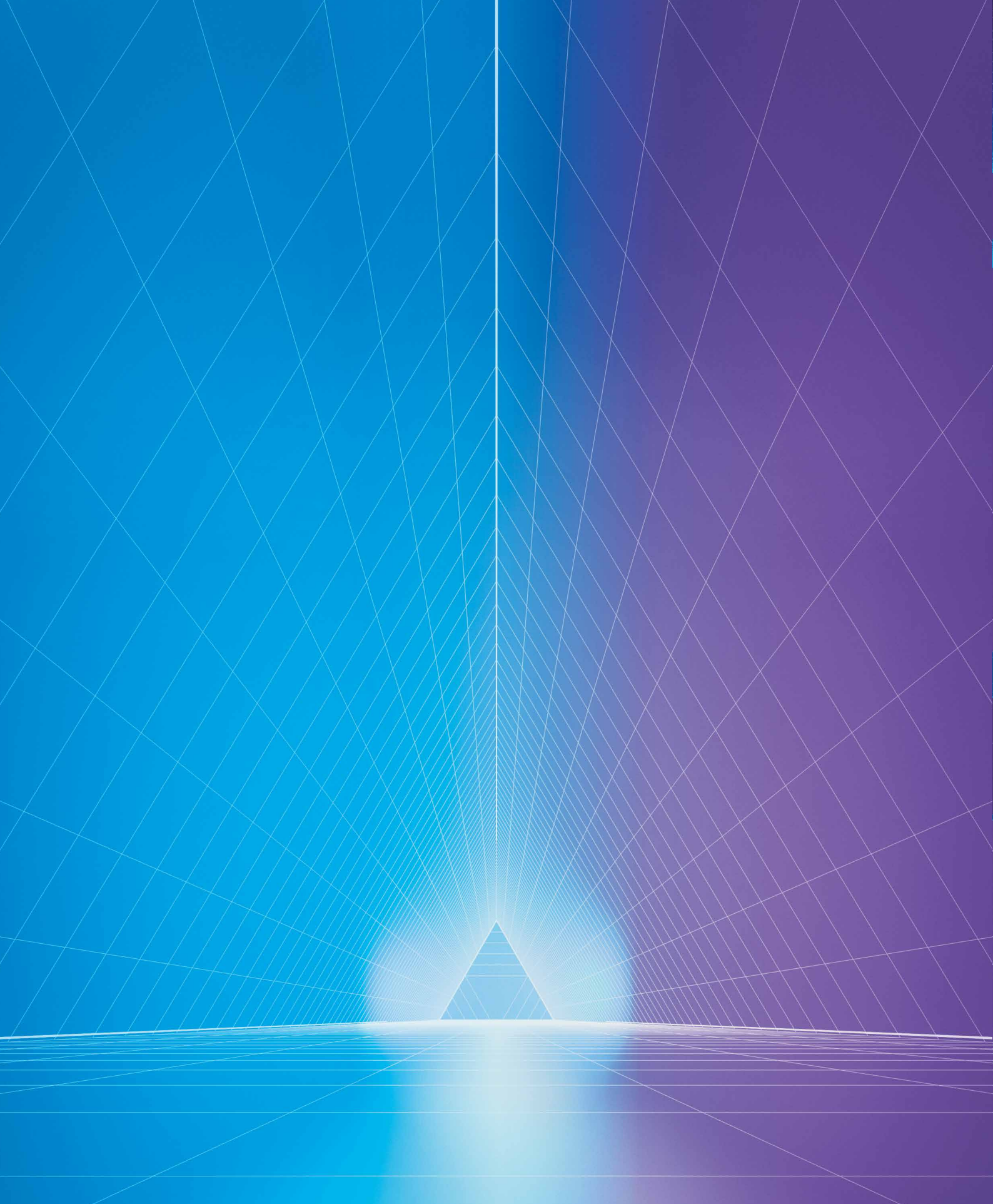


**Welfare Equipment**  
Accessibility Innovations Company  
TEL: +81-78-413-2724  
URL: <https://mobilityassist.nabtesco.com/en/>



**Packaging Machines**  
PACRAFT Co., Ltd.  
TEL: +81-3-6275-1341  
URL: <https://pacraft-global.com/en/>





**Nabtesco**  
moving it. stopping it.

Copyright © 2024 Nabtesco Corporation  
March 2024 Edition